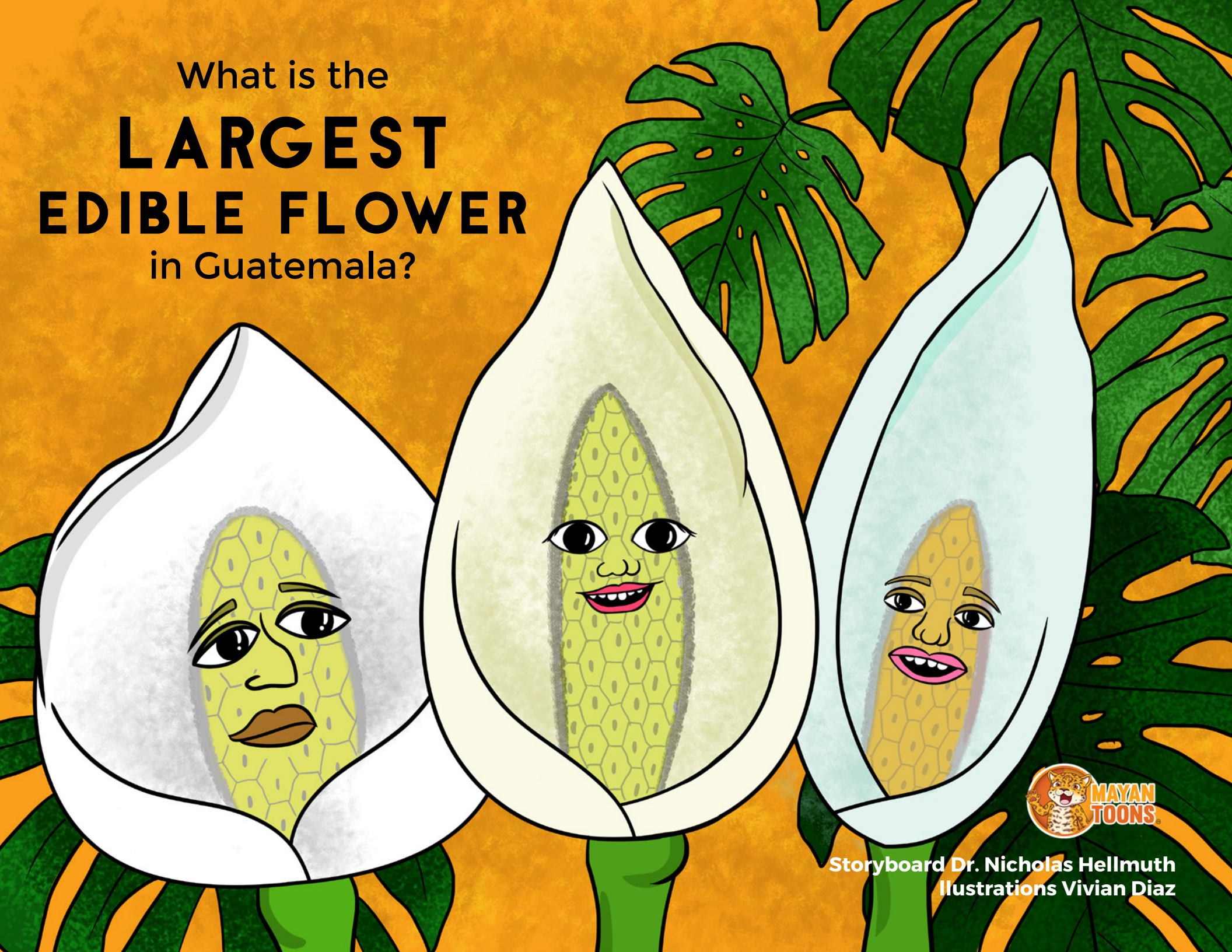


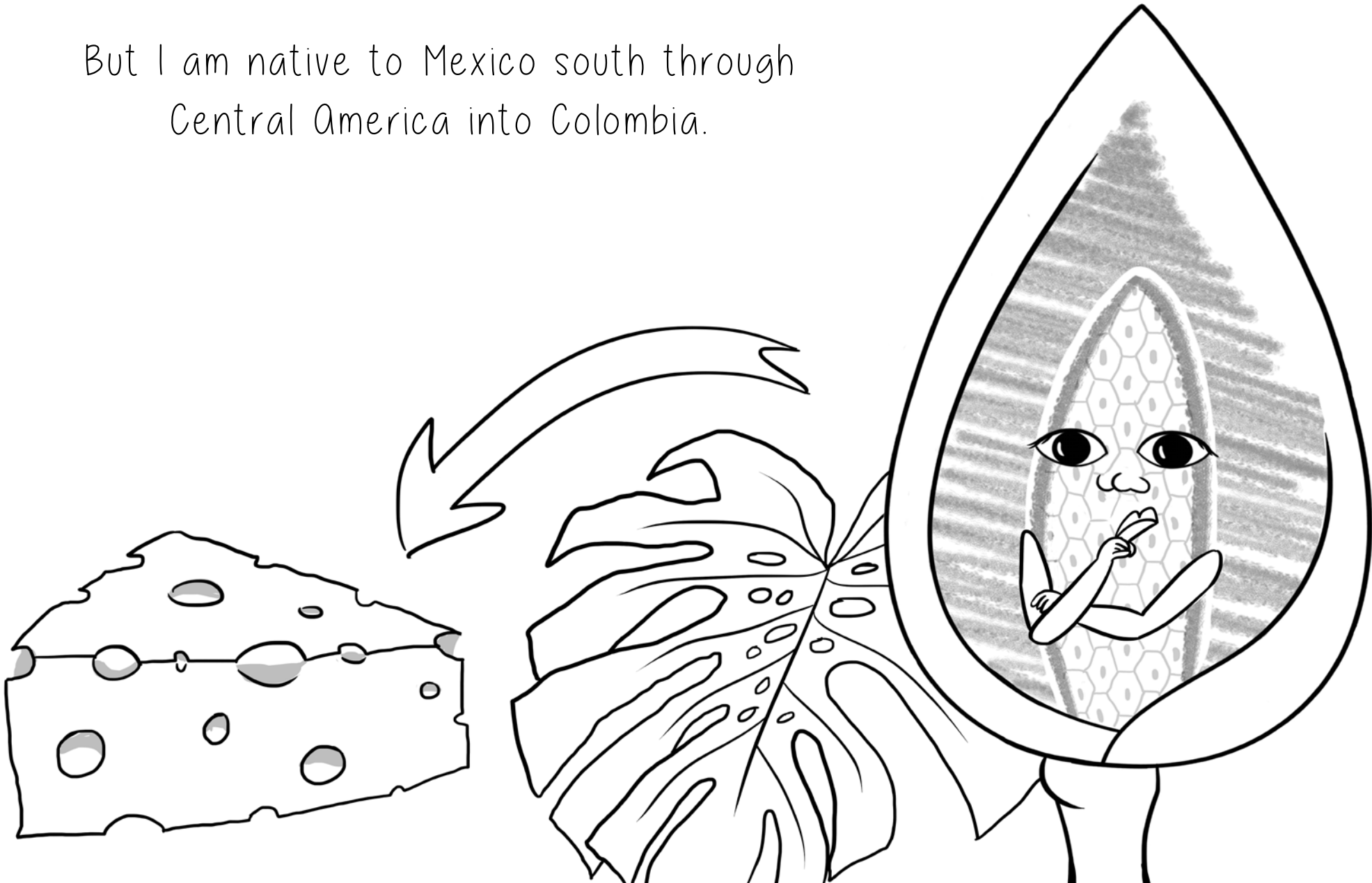
What is the
LARGEST
EDIBLE FLOWER
in Guatemala?

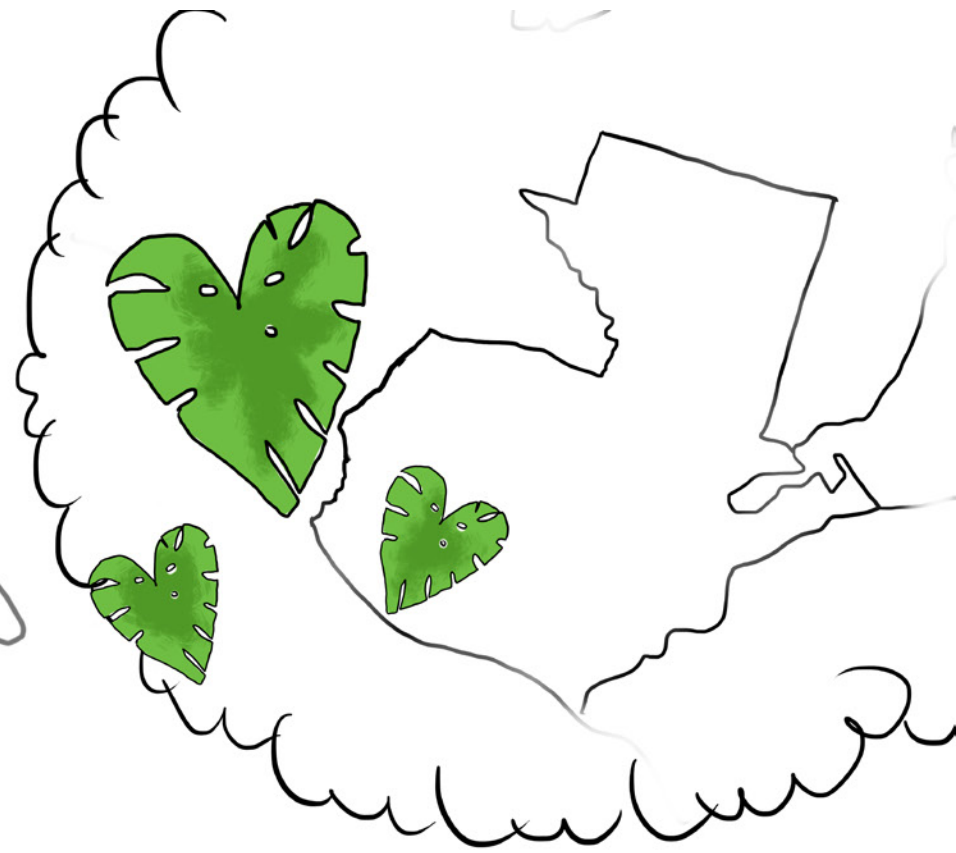
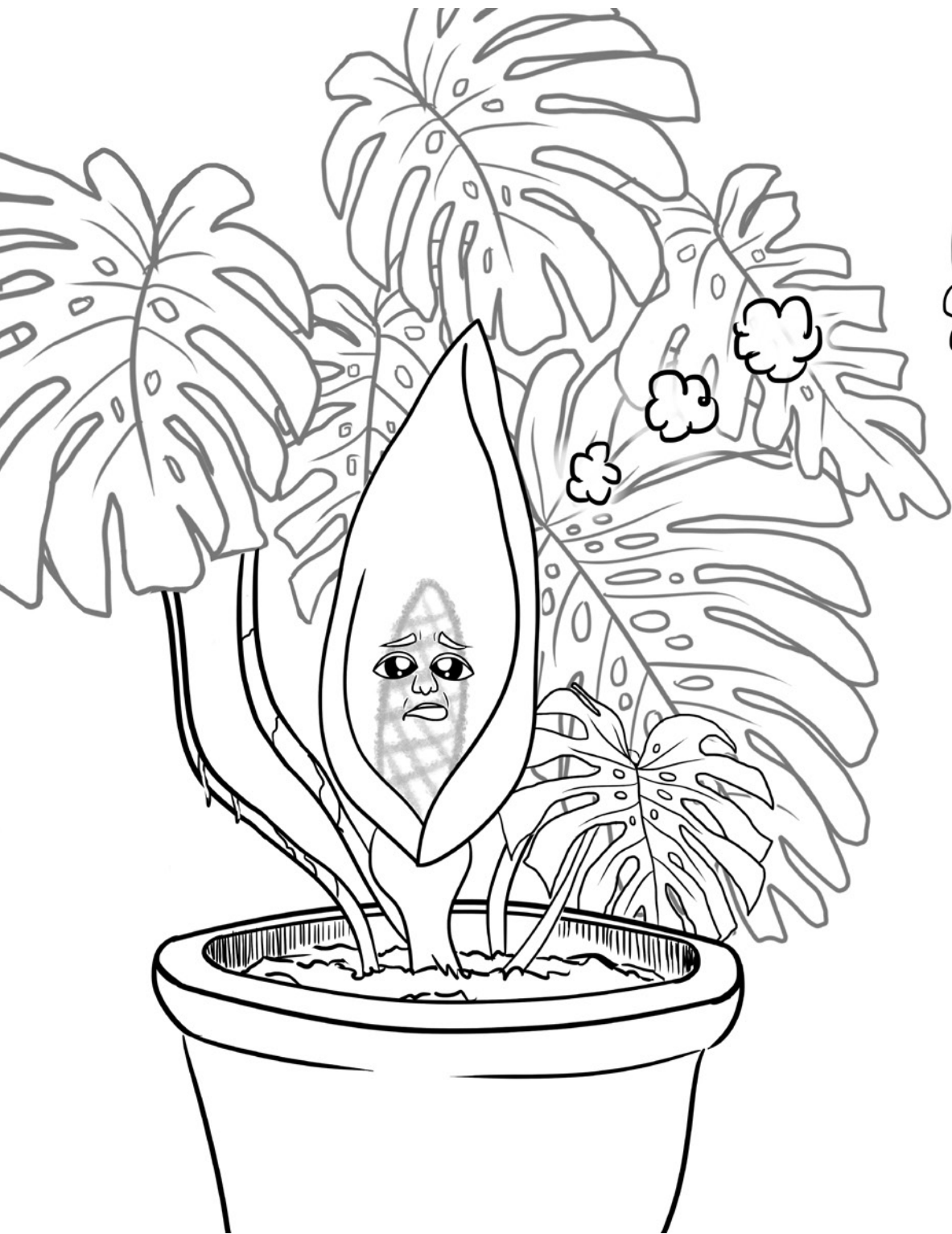


Storyboard Dr. Nicholas Hellmuth
Illustrations Vivian Diaz

Some people call me the Swiss cheese plant

But I am native to Mexico south through
Central America into Colombia.



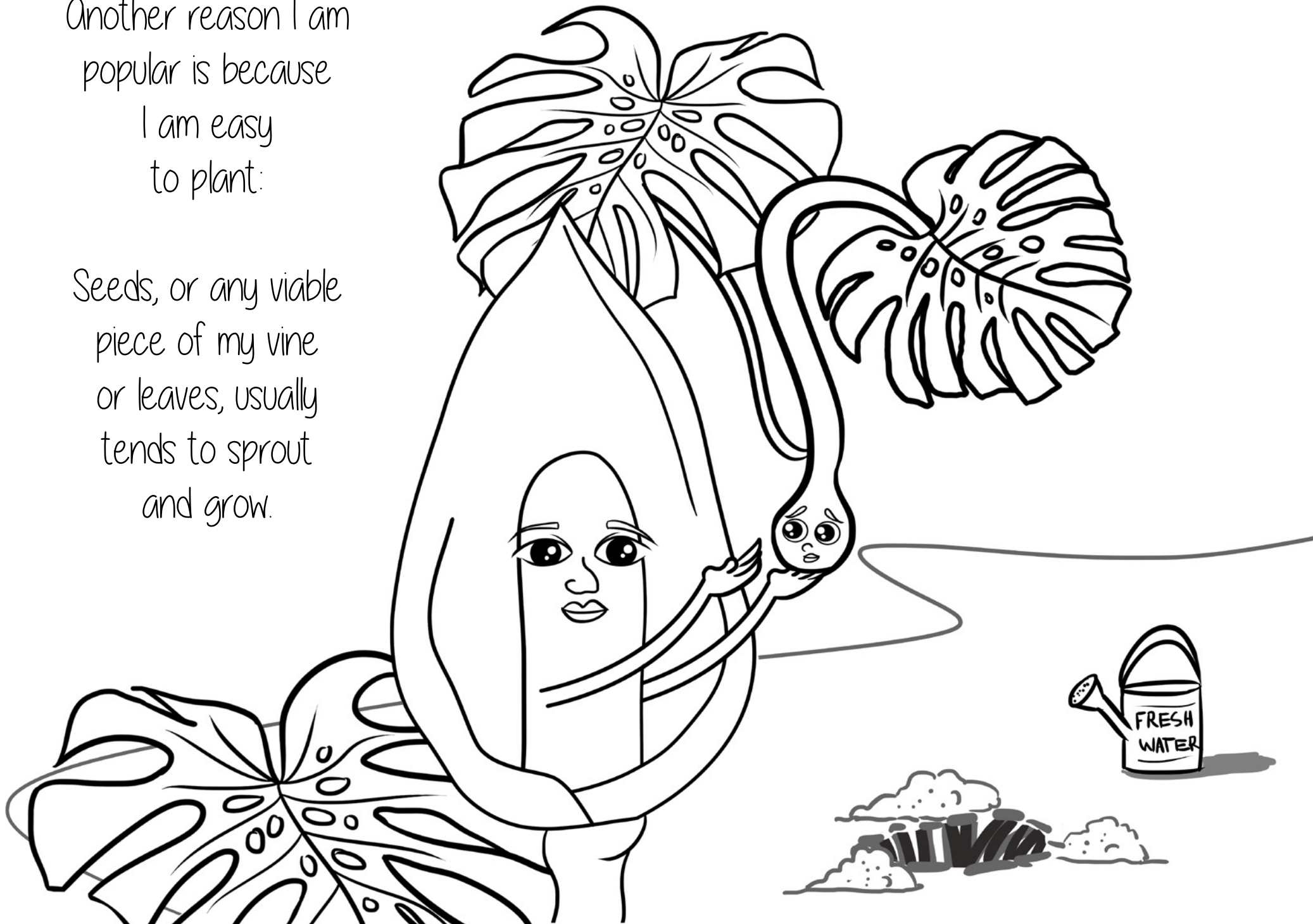


I am popular around the world in gardens.

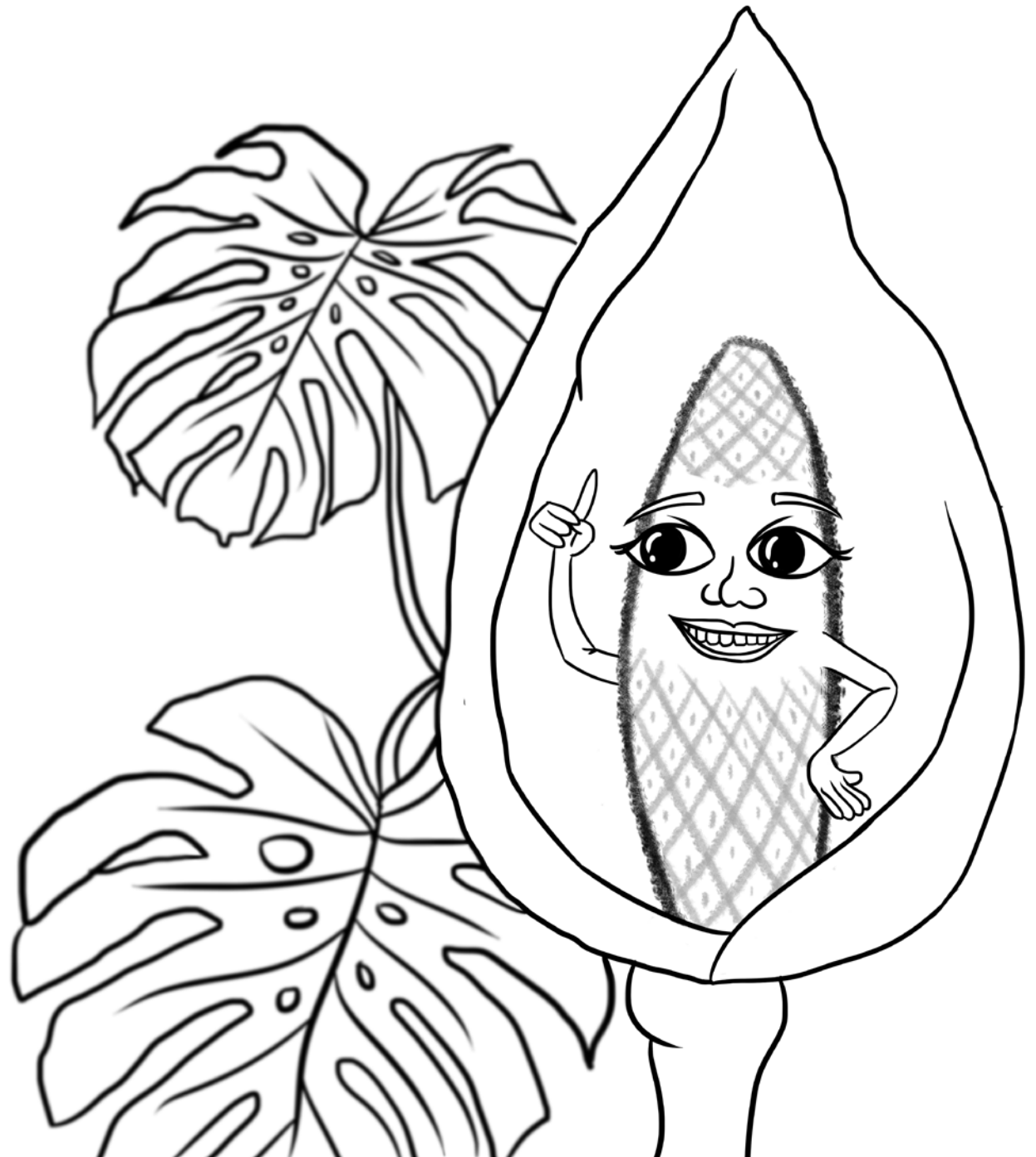
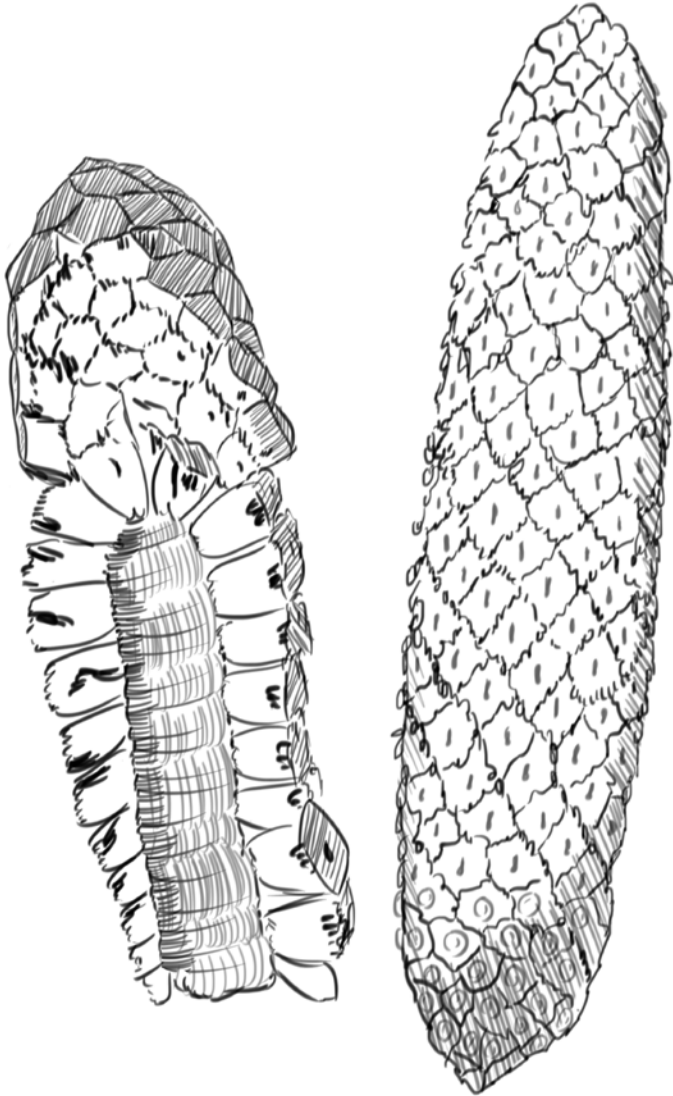
But I miss my home territory and the Mayan people of Guatemala.

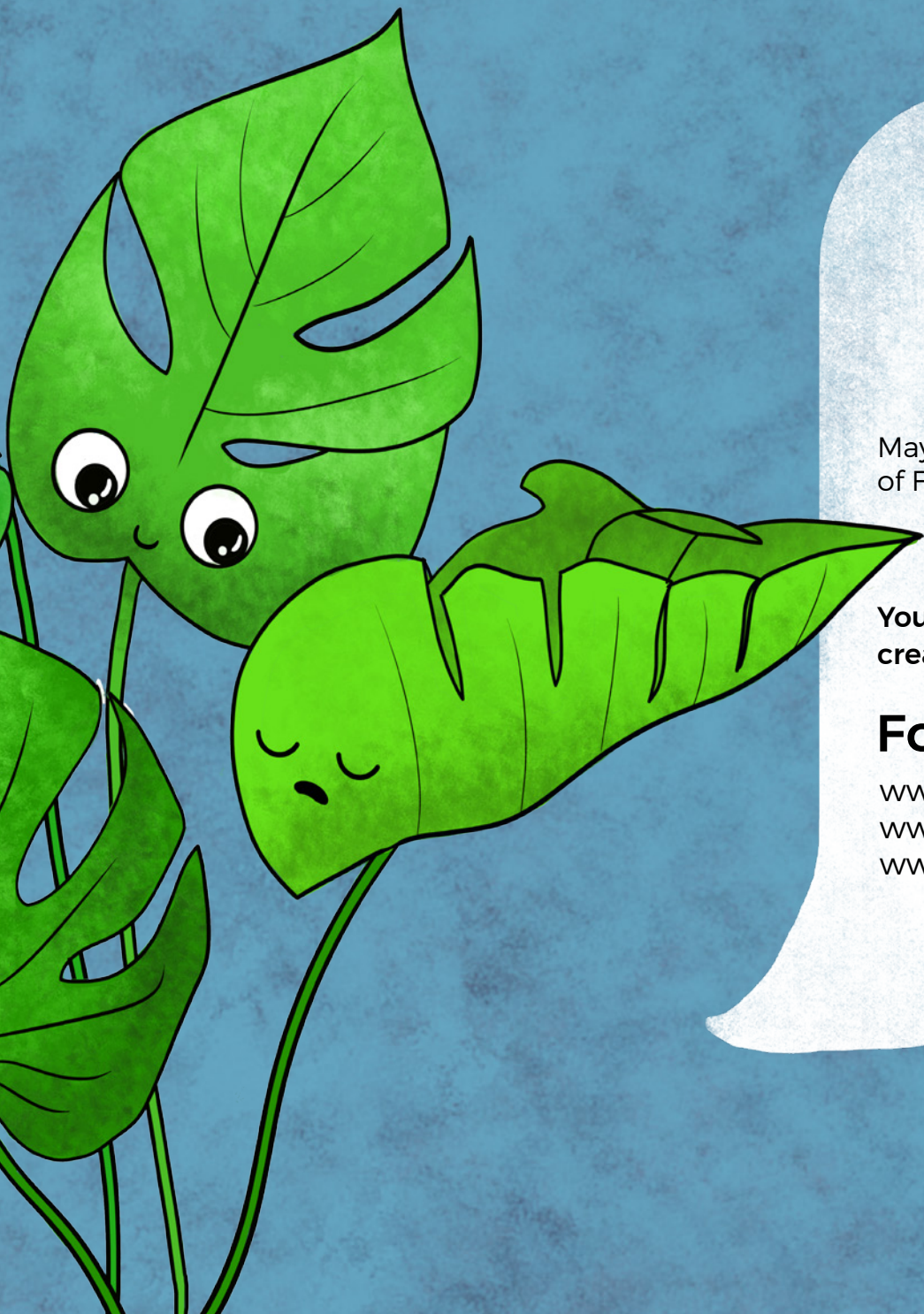
Another reason I am popular is because I am easy to plant:

Seeds, or any viable piece of my vine or leaves, usually tends to sprout and grow.



This part of me,
the inflorescence,
is edible.





Find out in this book what else can I do!

I'm not only a decorative plant, I have plenty
of uses at your home!

MayanToons are produced by the 100% Guatemalan team
of FLAAR Mesoamerica, coordinated by FLAAR (USA).


You can learn more about our educational comic book
creation and illustrator teams on www.mayantoons.org

For more content:

www.maya-ethnobotany.org

www.maya-ethnozoology.org

www.mayan-characters-value-based-education.org

 @mayantoonsgt

 @Mayantoons